



Flex Series
(Vertical Installation)
Installation Guide

Flex Series

(Vertical Install.)
Installation Guide

- Table of Contents -

Section	Page
<i>General Notes</i>	<i>i</i>
<i>Panel Details</i>	<i>1</i>
<i>Clips</i>	<i>2</i>
<i>Panel Closures</i>	<i>3</i>
<i>Closure Installation</i>	<i>4</i>
<i>Base</i>	<i>5</i>
<i>Sill</i>	<i>6</i>
<i>End Wall</i>	<i>7</i>
<i>Outside Corner</i>	<i>8</i>
<i>Inside Corner</i>	<i>9</i>
<i>Soffit (Front)</i>	<i>10</i>
<i>Soffit (Back)</i>	<i>11</i>
<i>End Splice (w/Trim)</i>	<i>12</i>
<i>Parapet</i>	<i>13</i>
<i>Door/Window (Head)</i>	<i>14</i>
<i>Door/Window (Jamb)</i>	<i>15</i>
<i>Door/Window (Sill)</i>	<i>16</i>
<i>Wall Penetration (3D)</i>	<i>17</i>
<i>Wall Penetration</i>	<i>18</i>
<i>Rigid Insulation</i>	<i>19</i>

General Notes

The attached installation details are intended to be a design aid and do not depict all situations. Modifications are the responsibility of the designer/user and should take into account climate conditions such as wind and snow, governing code requirements, and the actual usage and maintenance of the structure.

Applications:

Flex Series can be utilized as a wall panel installed in the vertical or horizontal orientation. It shall not be utilized for roof applications. Flex Series can be used over solid substrates or over spaced supports. This installation guide depicts clip attached panels installed using flush mounted clips. Details for direct fastened panels or clip attached panels using standoff clips would be similar.

Flashings:

Where possible, flashings should be lapped away from prevailing winds. Certain flashings should be supported if it is likely that equipment (ladder, etc.) will be used against them. Check with AEP Span any time you intend to specify a prefinished flashing in a gauge or finish different than the Flex Series. It is good practice to specify that all flashings be of the same material (gauge, color, finish) as the roof panels to ensure long-term durability. Field-painted flashings rarely equal the durability and colorfastness of factory baked-on paint systems. The enclosed details have minimized the use of exposed fasteners where possible. The edges of flashings have also been shown hemmed to strengthen and to minimize the exposure of cut edges.

Flashing design and fabrication is generally the responsibility of the contractor. For convenience, we have provided some typical flashing drawings on our website at <https://www.aepspan.com/products/trims-flashings/>. Applicable Flex Series flashing part numbers are referenced within this installation guide. Note that flashing shapes and dimensions may vary greatly based on project requirements. Installation details and flashings referenced within are for general design guidance only.

Condensation, Insulation, & Ventilation:

It is the designer's responsibility to determine the need and composition of condensation control materials including insulation and vapor retarders, as well as ventilation requirements. Metal wall products are susceptible to condensation and its control should be carefully considered.

Thermal Movement:

Both panels and flashings must allow for thermal movement (expansion and contraction) of the materials, especially where long lengths are used. Appropriate gaps or provisions must be provided to accommodate thermal movement.

Oil Canning:

Flat metal surfaces often display waviness commonly referred to as 'oil canning'. This can be caused by variations in raw material, processing variations, product handling, or variations in the installation substrate. Oil canning is a characteristic, not a defect, of panels manufactured from light-gauge metal. To reduce potential for oil canning, substrates should not deviate from a flat plane more than 1/4 inch in 20 feet, or 1/8 inch in 5 feet. Oil canning is not a cause for panel rejection. Additional technical information is available upon request.

References:

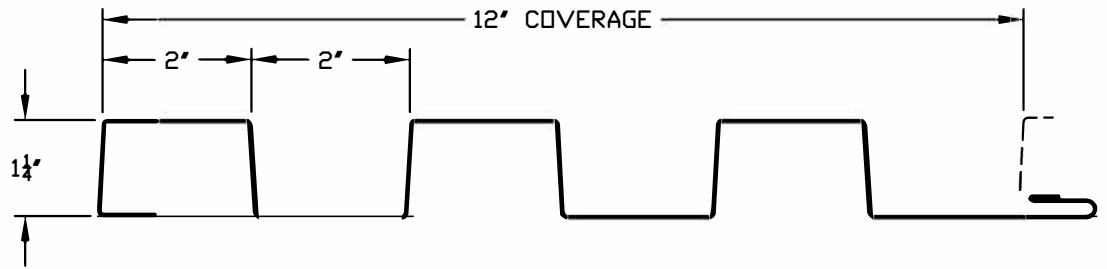
The Sheet Metal and Air Conditioning Contractors' National Association Inc. (SMACNA) manual is an excellent reference for sheet metal contractors. It's guidelines for underlayments, gutter and downspout size requirements, and expansion/contraction of metals and flashing joints should be followed.

Technical Assistance:

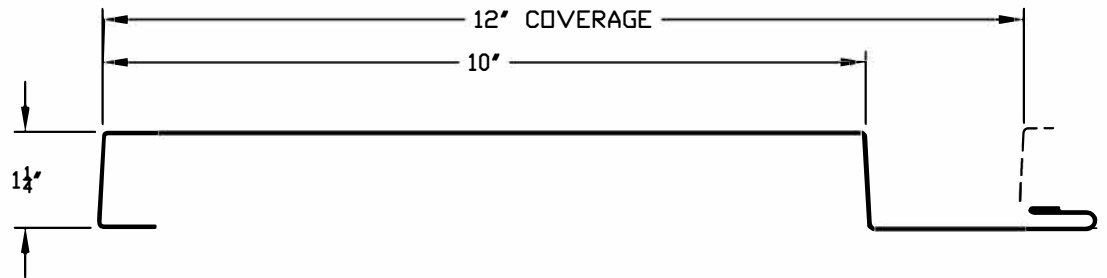
Contact your AEP Span Sales Representative for additional information.



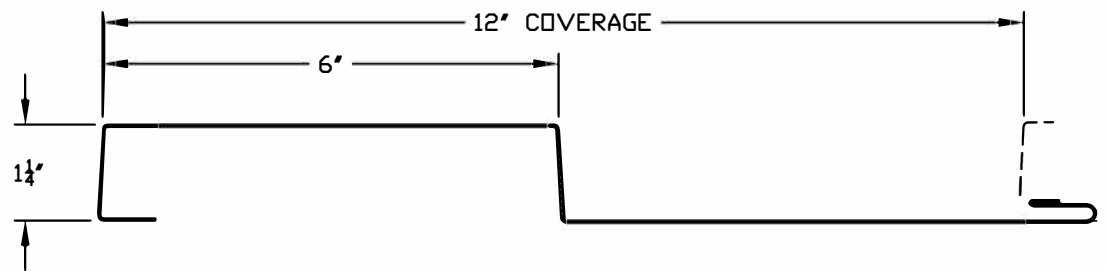
1.2FX10-12



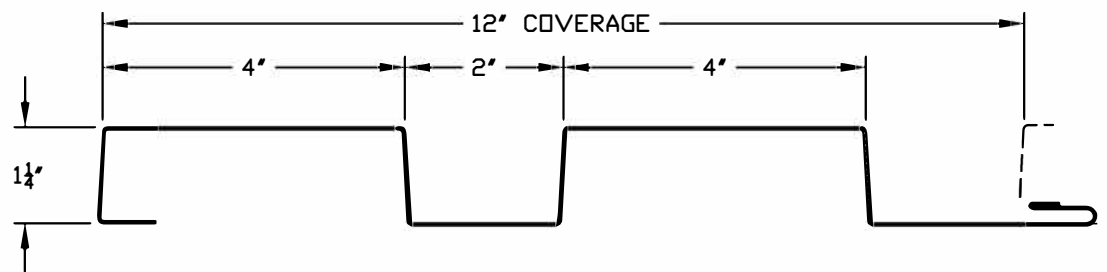
1.2FX20-12



1.2FX30-12



1.2FX40-12



PANEL INTERLOCK OPTIONS



DIRECT FASTENED
(‘D’ P/N SUFFIX)



CLIP ATTACHED
(‘C’ P/N SUFFIX)

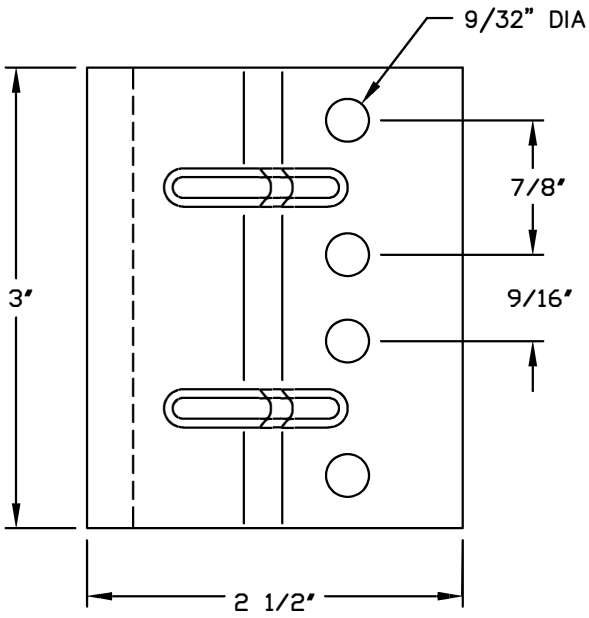


FLEX SERIES
VERTICAL INSTALL.

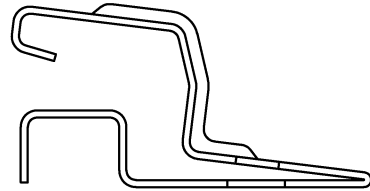
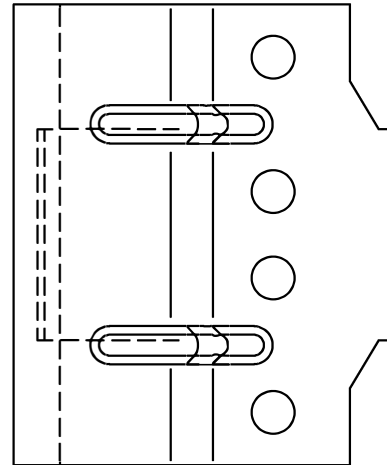


PANEL DETAILS

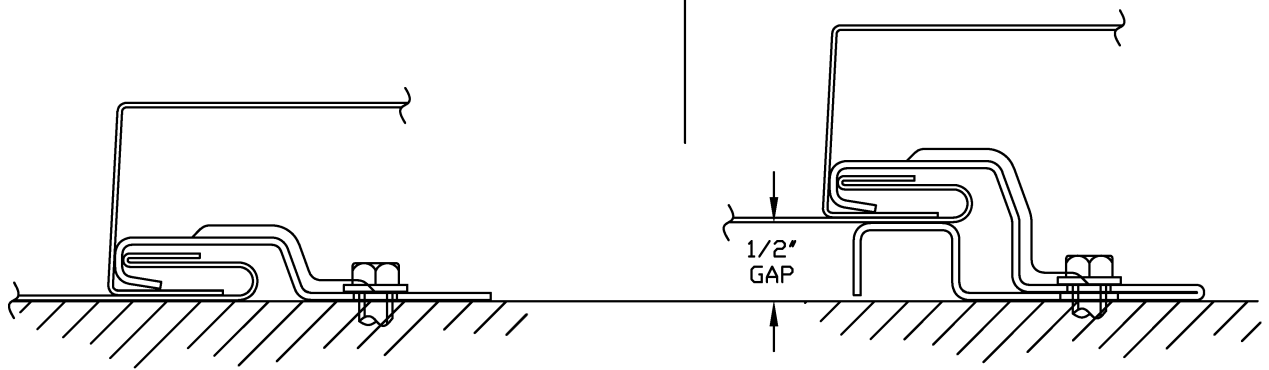
FXV-01



FLUSH CLIP
P/N: #WALLCLP



STANDOFF CLIP
P/N: #WALLCLP0.5



INSTALLED POSITION



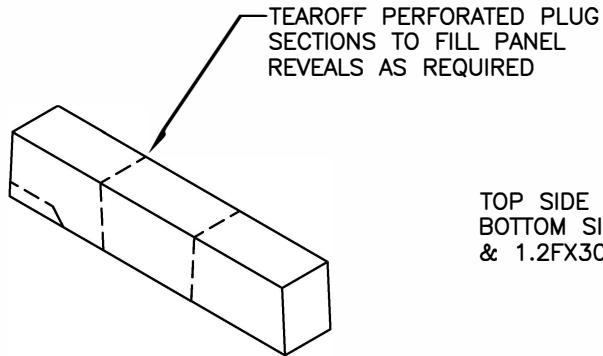
FLEX SERIES
VERTICAL INSTALL.



CLIPS

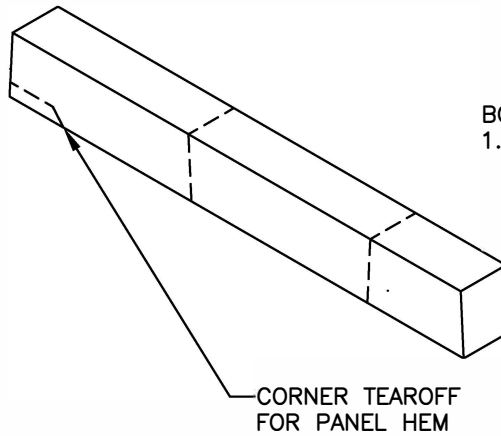
FXV-02

CL1.2FX-1P



TOP SIDE CLOSURE FOR ALL PANELS &
BOTTOM SIDE CLOSURE FOR 1.2FX10-12
& 1.2FX30-12

CL1.2FX-2P



BOTTOM SIDE CLOSURE FOR
1.2FX20-12 & 1.2FX40-12

NOTE: APPLICATIONS UTILIZING STANDOFF CLIP ALSO REQUIRE
UNIVERSAL CLOSURE STRIP (AEP #CLEM1x19.68 OR EQUIV.) TO
SEAL OFF ADDITIONAL 1/2" PANEL-TO-SUBSTRATE GAP.



PANEL CLOSURES

FXV-03

TOP SIDE CLOSURE
INSTALLATION

OPTIONAL: 1"W x 1/8" THK
FOAM TAPE (MAS.125PE) TO
SECURE CLOSURE PLUGS
AGAINST PANEL & SEALANT.

OPTIONAL FIELD
FABRICATED CLOSURE
COVER TRIM (X)

TOP CLOSURE
PLUG

SEALANT BEAD

BOTTOM SIDE CLOSURE
INSTALLATION
(FLUSH MOUNTED PANELS)

BOTTOM SIDE CLOSURE
INSTALLATION
(PANELS WITH STANDOFF CLIP)

BOTTOM
CLOSURE PLUG

1X1 UNIVERSAL
CLOSURE STRIP
(AEP #CLEM1X19.68
OR EQUIV.)

NOTES:
- ALL CLOSURE PLUGS SECURED AND
SEALED WITH POLYURETHANE SEALANT
(X) - NOT BY AEP SPAN



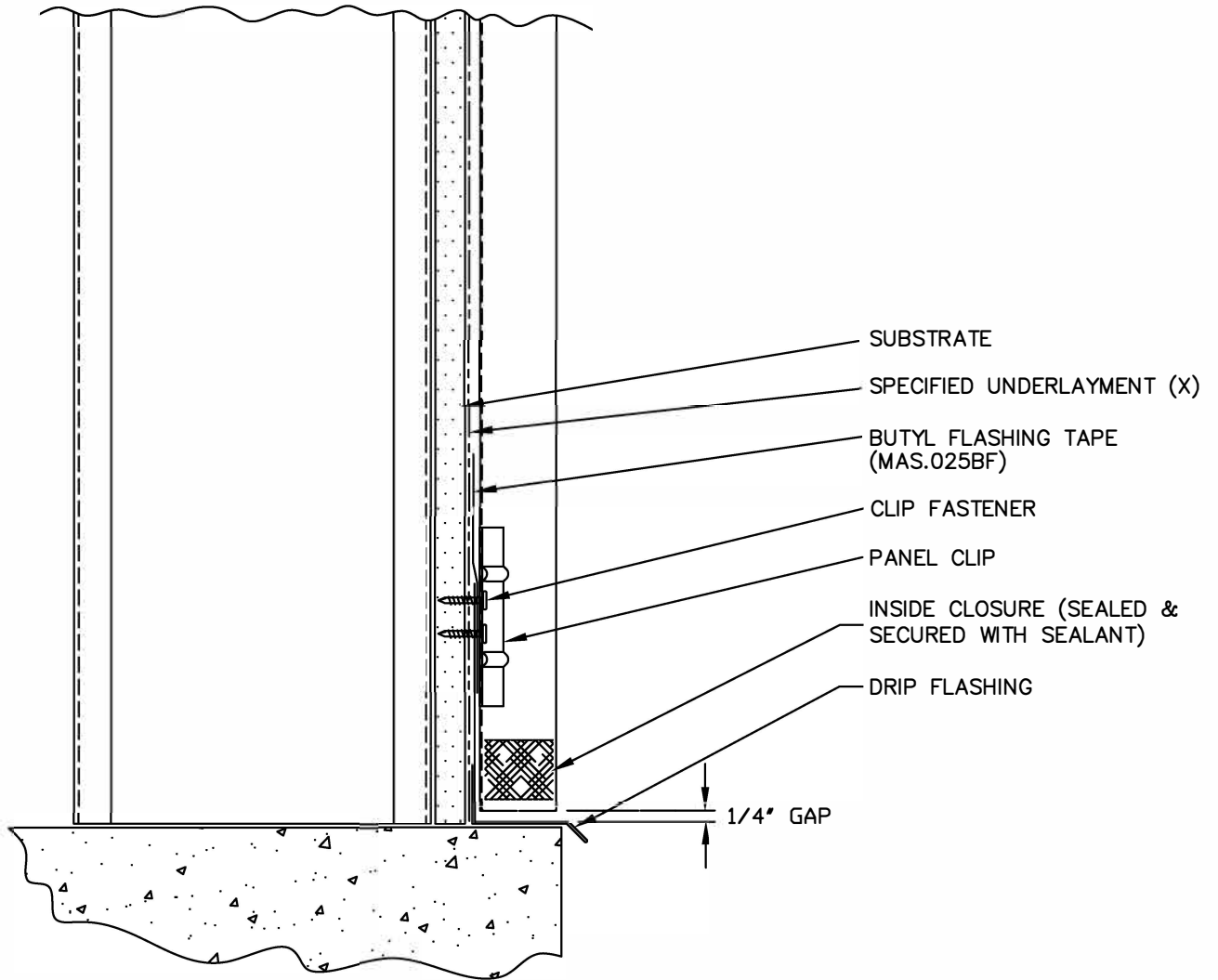
FLEX SERIES
VERTICAL INSTALL.



CLOSURE
INSTALLATION

FXV-04

	TRIM	DIM A	USAGE
4"	DF022	1 5/8"	1.2FX FLUSH MOUNT
	DF023	2 1/8"	1.2FX W/0.5" STANDOFF



(X) - NOT BY AEP SPAN

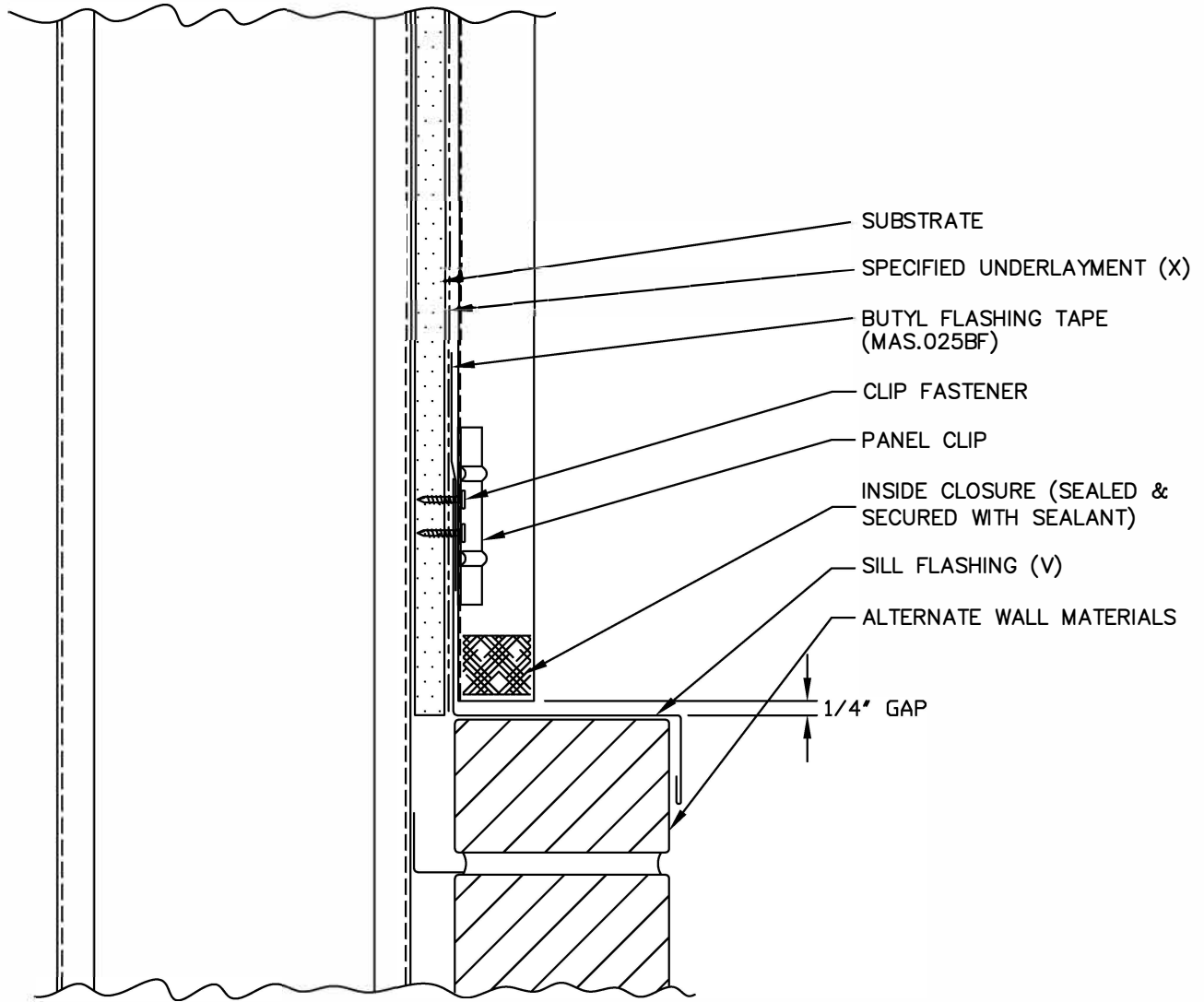


FLEX SERIES
VERTICAL INSTALL.



BASE

FXV-05



(X) - NOT BY AEP SPAN
 (V) - DIMENSIONS VARY BASED ON PROJECT CONDITIONS

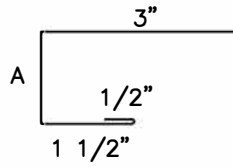


FLEX SERIES
 VERTICAL INSTALL.

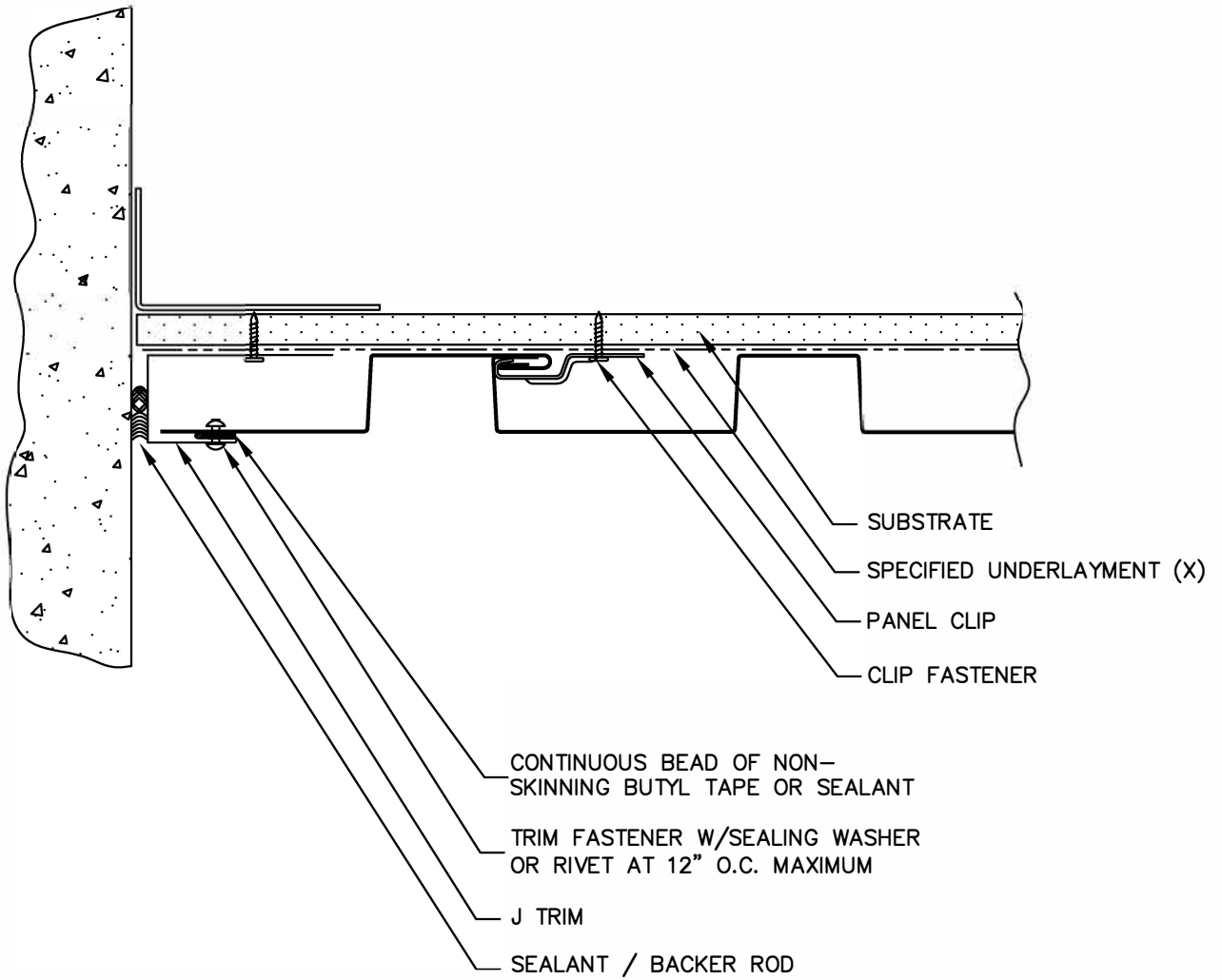


SILL

FXV-06



TRIM	DIM A	USAGE
JT109	1 1/2"	1.2FX FLUSH MOUNT
JT110	2"	1.2FX W/0.5" STANDOFF



(X) - NOT BY AEP SPAN

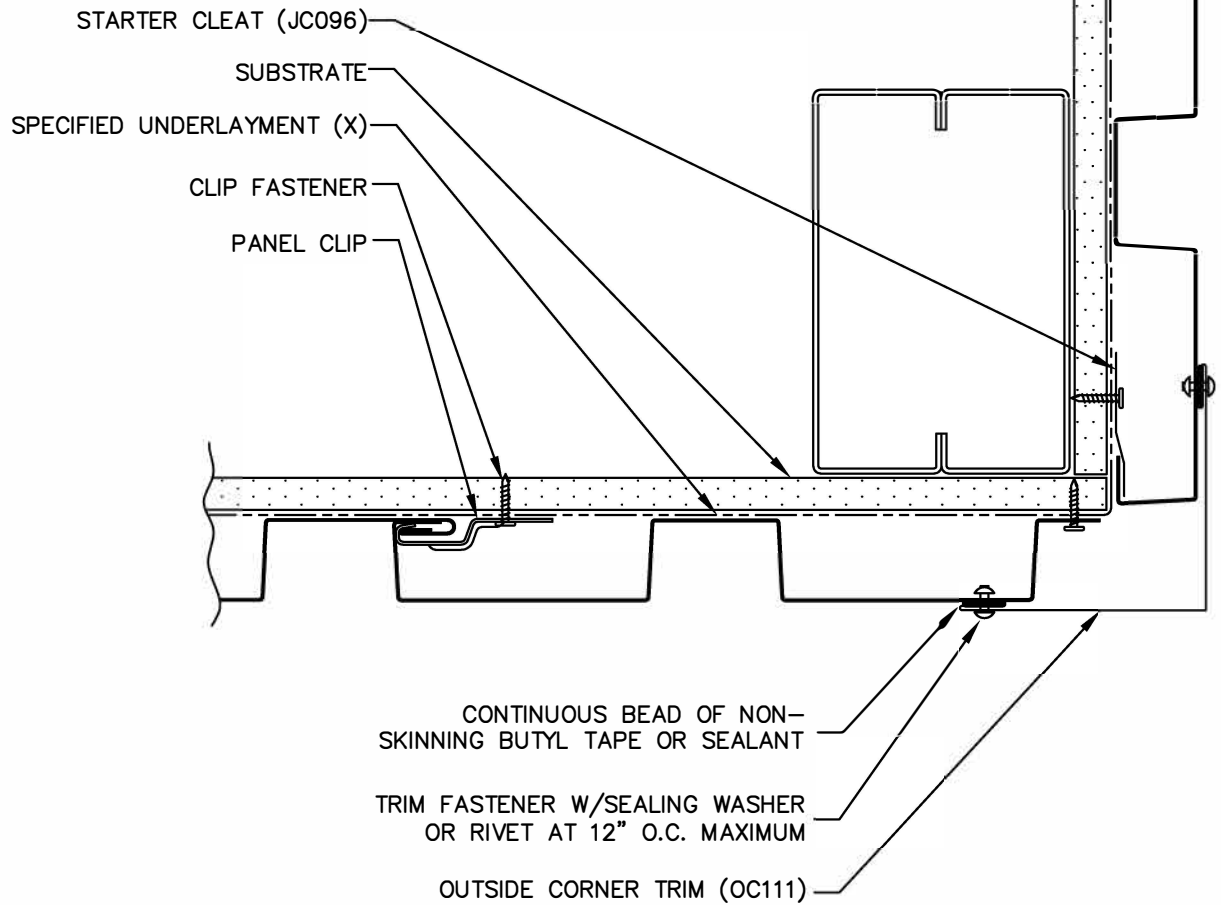
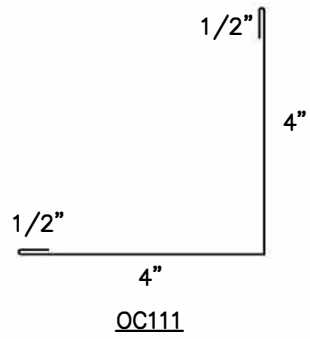
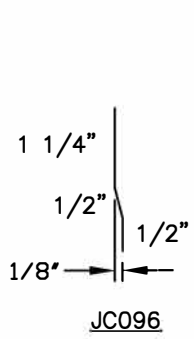


FLEX SERIES
VERTICAL INSTALL.



END WALL

FXV-07



(X) - NOT BY AEP SPAN

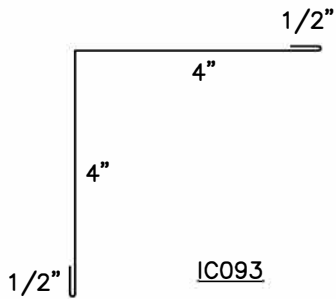


FLEX SERIES
VERTICAL INSTALL.

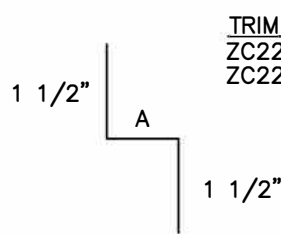


OUTSIDE CORNER

FXV-08

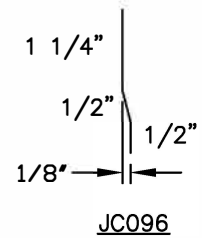


IC093

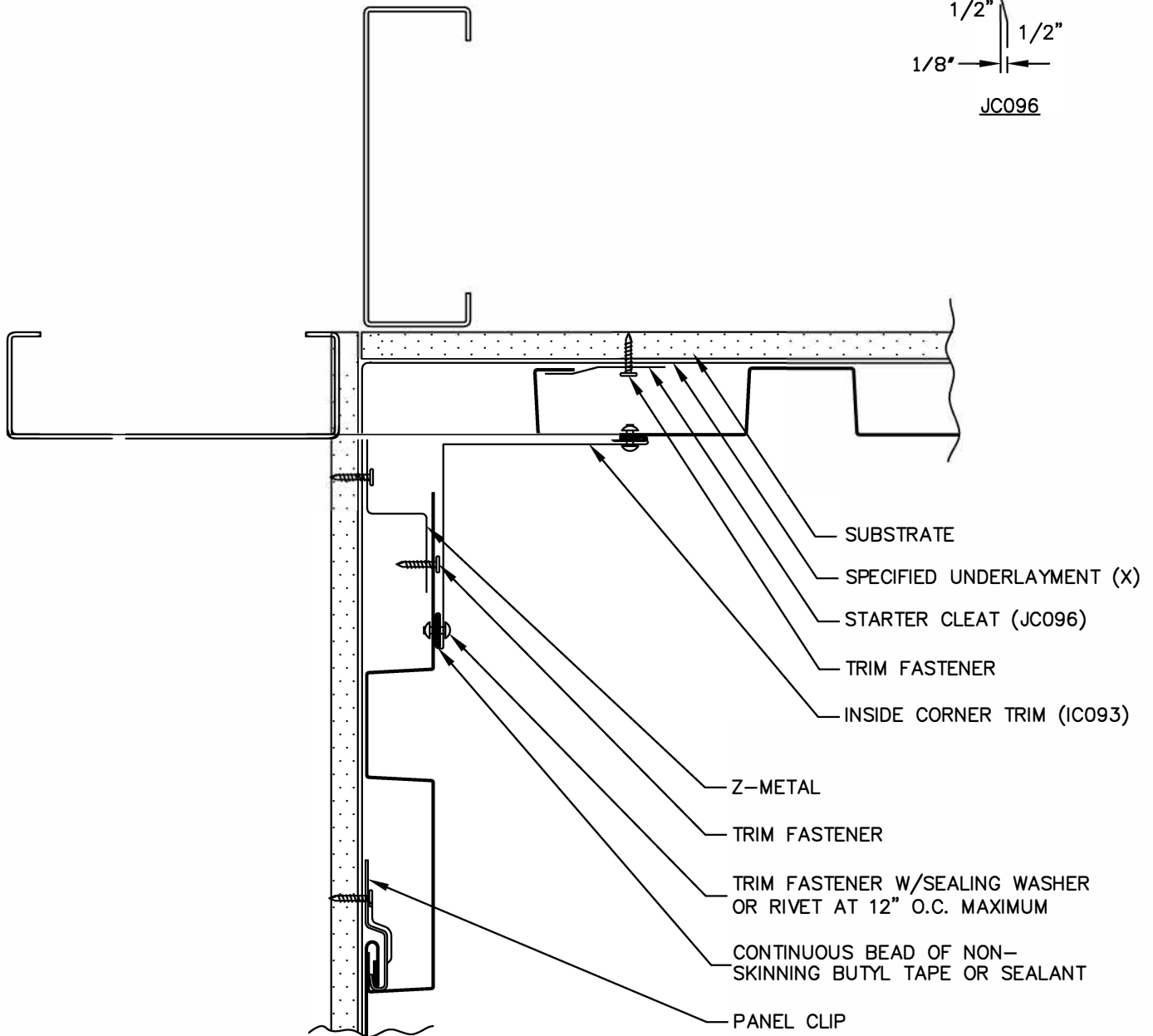


A

TRIM	DIM. A	USAGE
ZC226	1 1/4"	1.2FX FLUSH MOUNT
ZC220	1 3/4"	1.2FX W/0.5" STANDOFF



JC096



(X) - NOT BY AEP SPAN



FLEX SERIES
VERTICAL INSTALL.



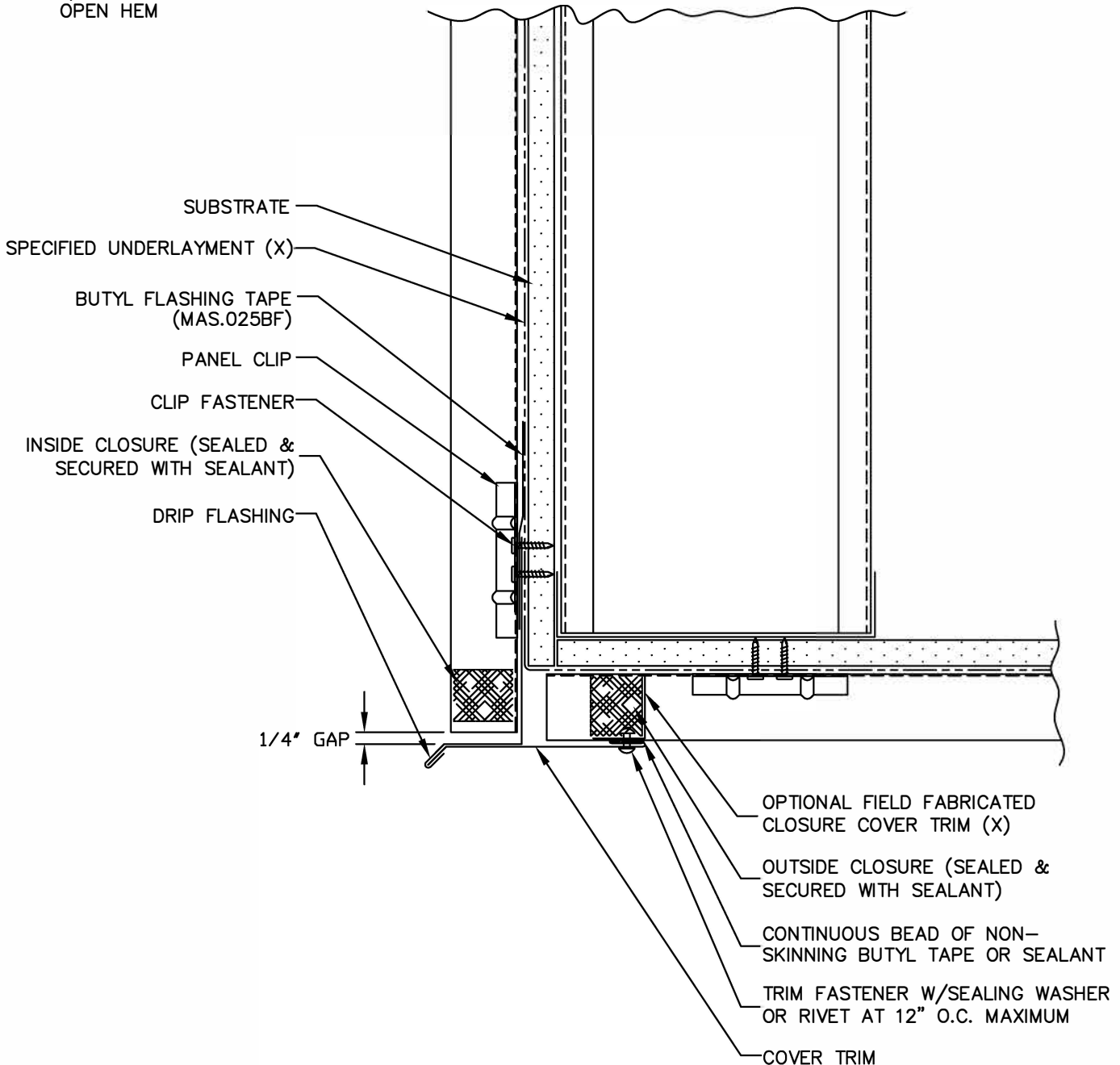
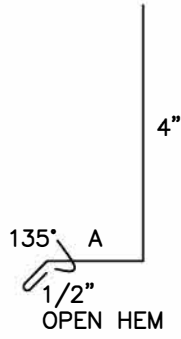
INSIDE CORNER

FXV-09

TRIM	DIM A	USAGE
DF028	1 1/2"	1.2FX FLUSH MOUNT
DF029	2"	1.2FX W/0.5" STANDOFF

1/2" (V) 1/2"
135°

COVER TRIM



(X) - NOT BY AEP SPAN
(V) - DIMENSION VARIES BASED ON PROJECT CONDITIONS

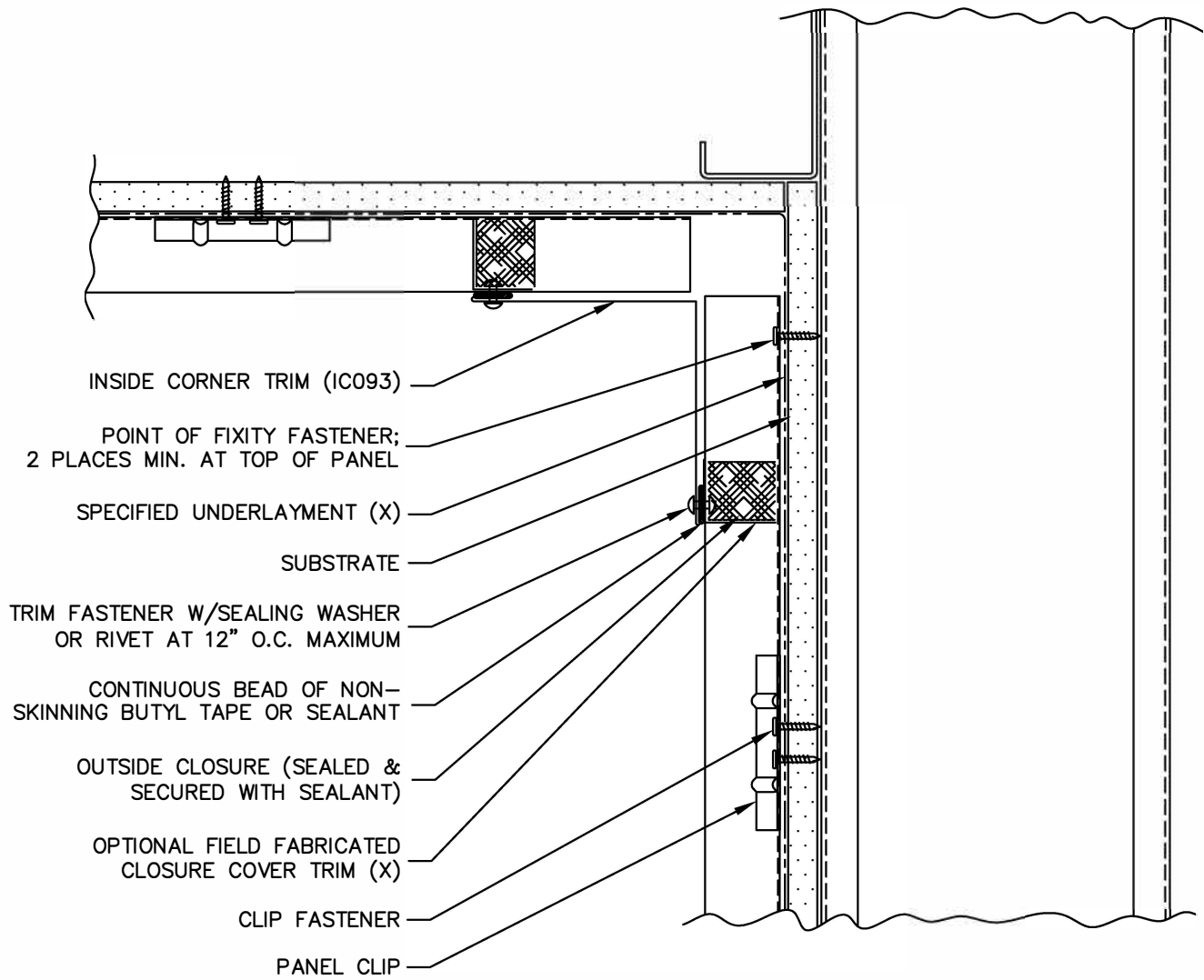
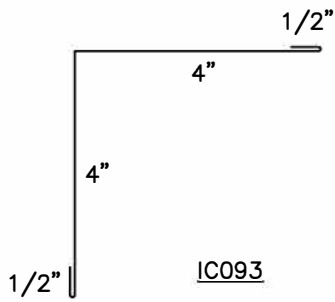


FLEX SERIES
VERTICAL INSTALL.



SOFFIT (FRONT)

FXV-10



(X) - NOT BY AEP SPAN

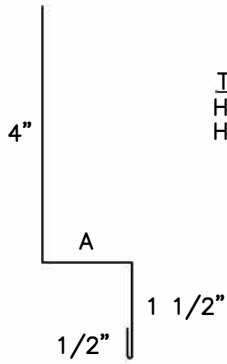


FLEX SERIES
VERTICAL INSTALL.

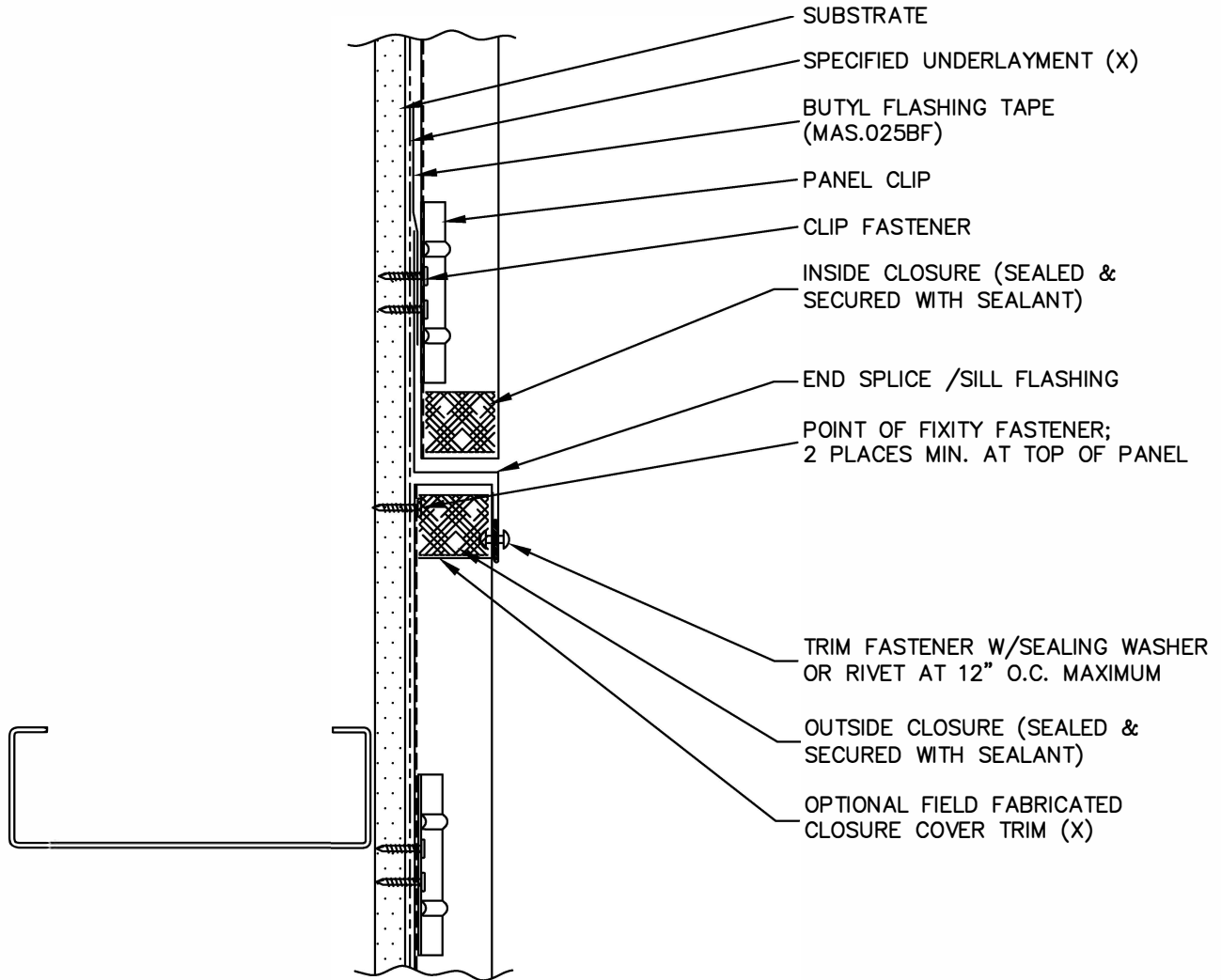


SOFFIT (BACK)

FXV-11



TRIM	DIM A	USAGE
HT096	1 1/2"	1.2FX FLUSH MOUNT
HT097	2"	1.2FX W/0.5" STANDOFF



(X) - NOT BY AEP SPAN

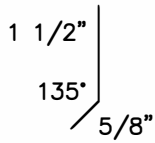


FLEX SERIES
VERTICAL INSTALL.

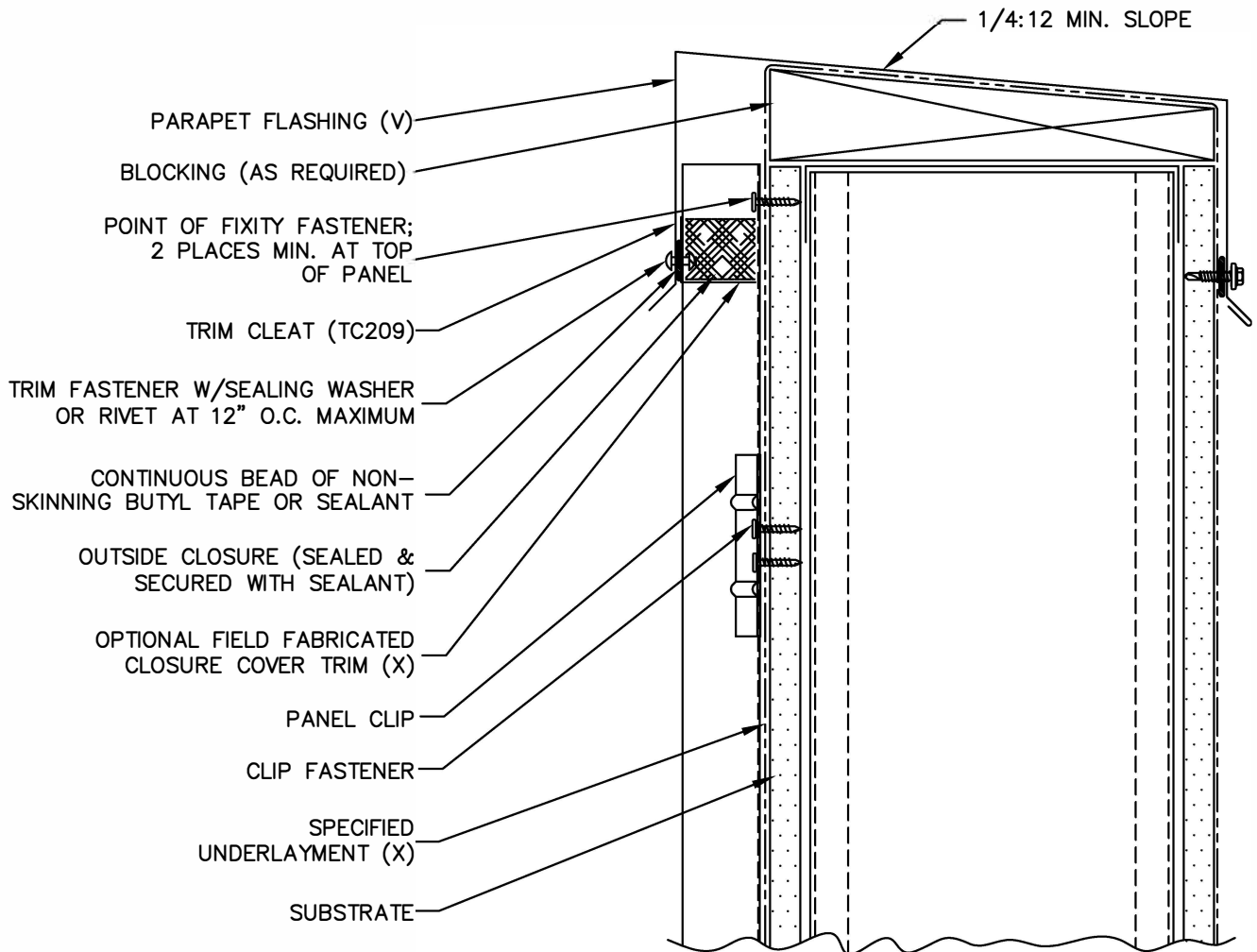


END SPLICE (W/TRIM)

FXV-12



TC209



(X) - NOT BY AEP SPAN
 (V) - DIMENSIONS VARY BASED ON PROJECT CONDITIONS

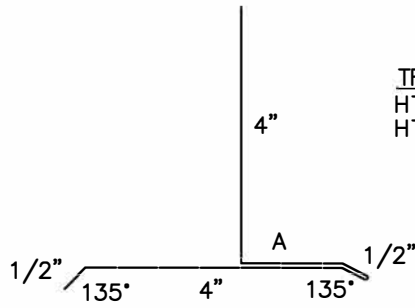


FLEX SERIES
 VERTICAL INSTALL.

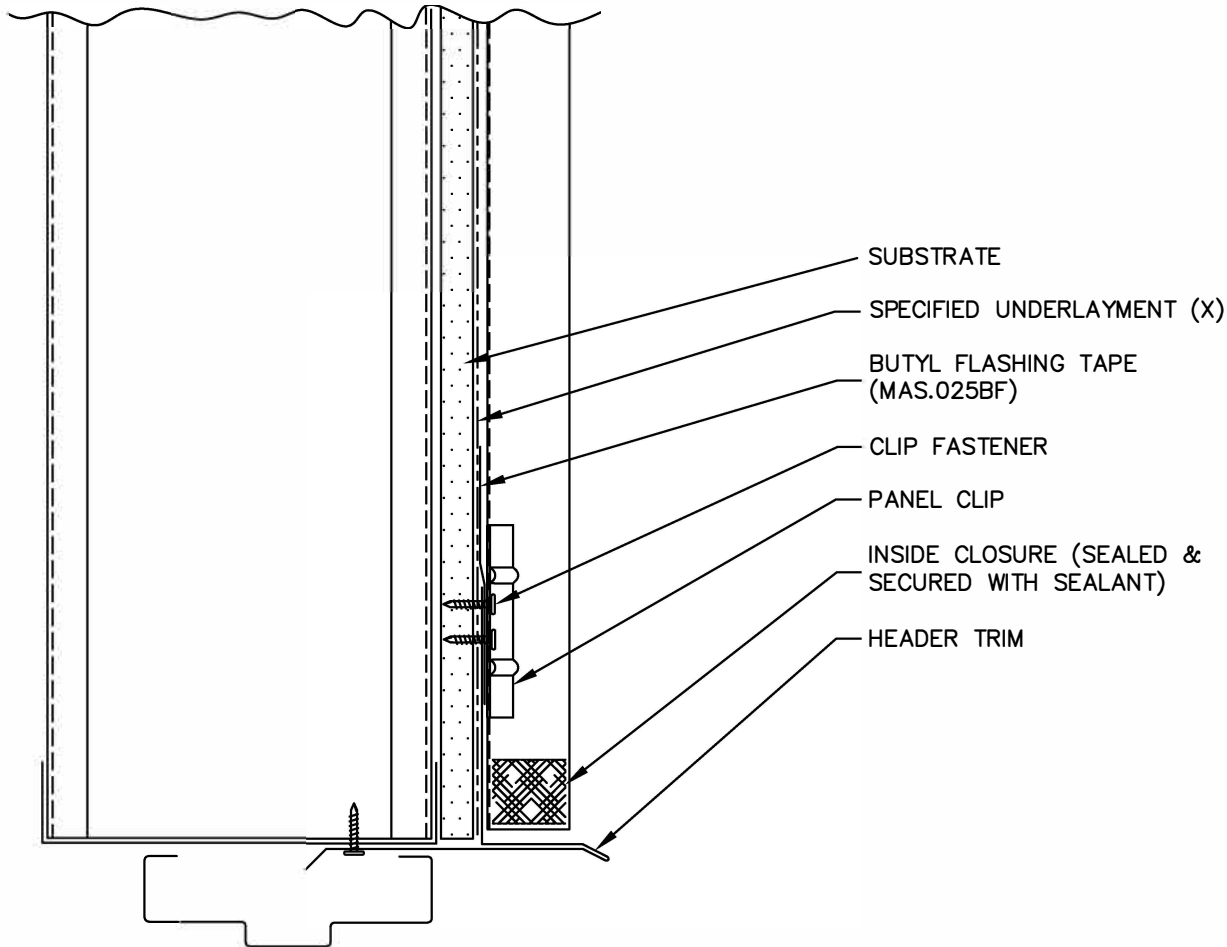


PARAPET

FXV-13



TRIM	DIM A	USAGE
HT095	1 1/2"	1.2FX FLUSH MOUNT
HT100	2"	1.2FX W/0.5" STANDOFF



(X) - NOT BY AEP SPAN

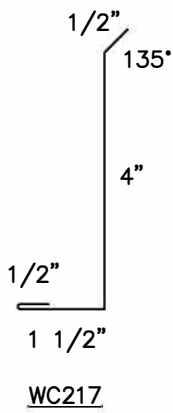


FLEX SERIES
VERTICAL INSTALL.

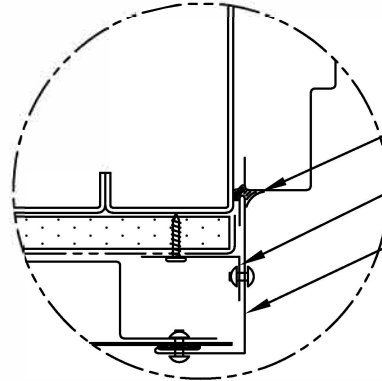
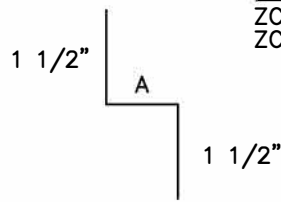


DOOR / WINDOW
(HEAD)

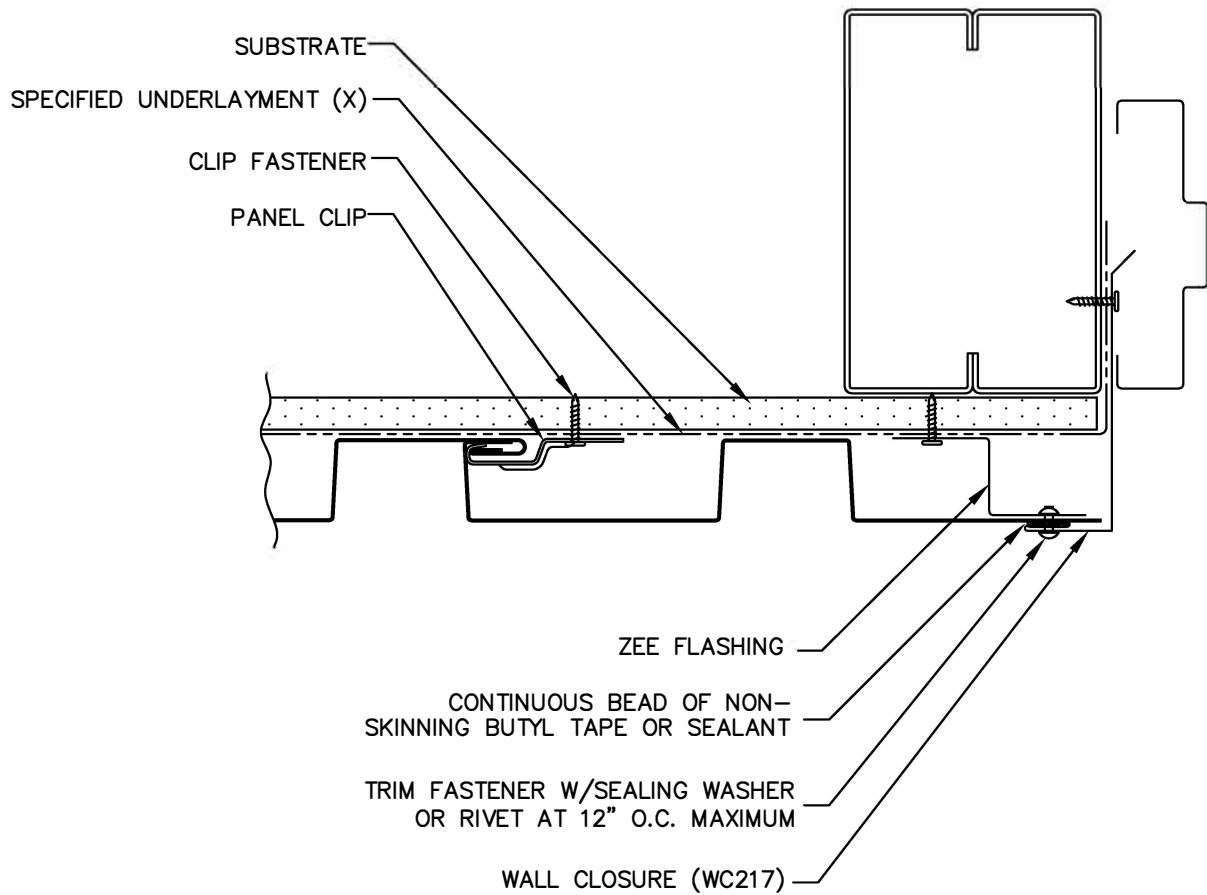
FXV-14



TRIM	DIM. A	USAGE
ZC226	1 1/4"	1.2FX FLUSH MOUNT
ZC220	1 3/4"	1.2FX W/0.5" STANDOFF



ALTERNATE DETAIL



(X) - NOT BY AEP SPAN

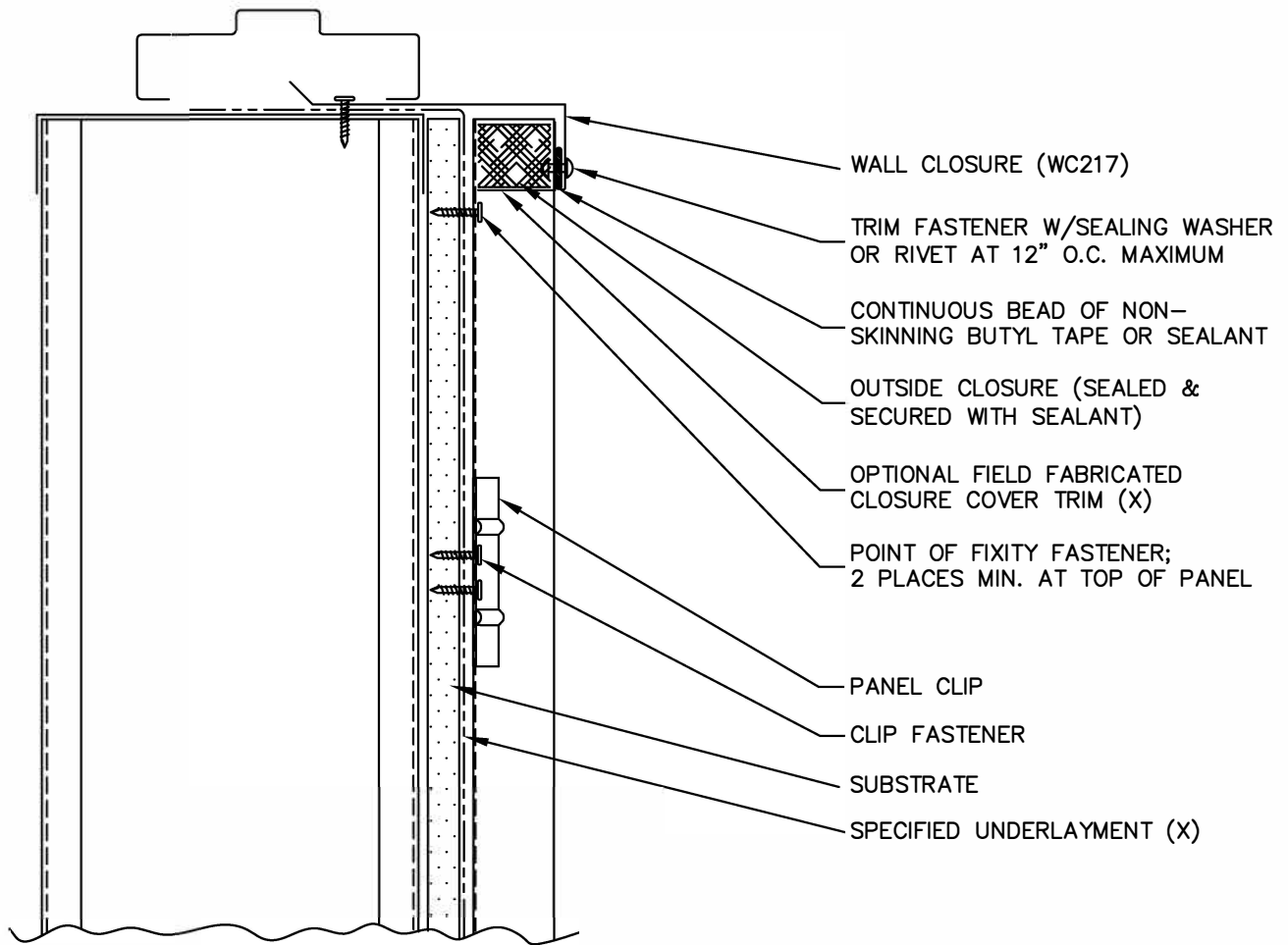
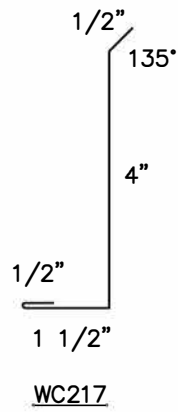


FLEX SERIES
VERTICAL INSTALL.



DOOR / WINDOW
(JAMB)

FXV-15



(X) - NOT BY AEP SPAN



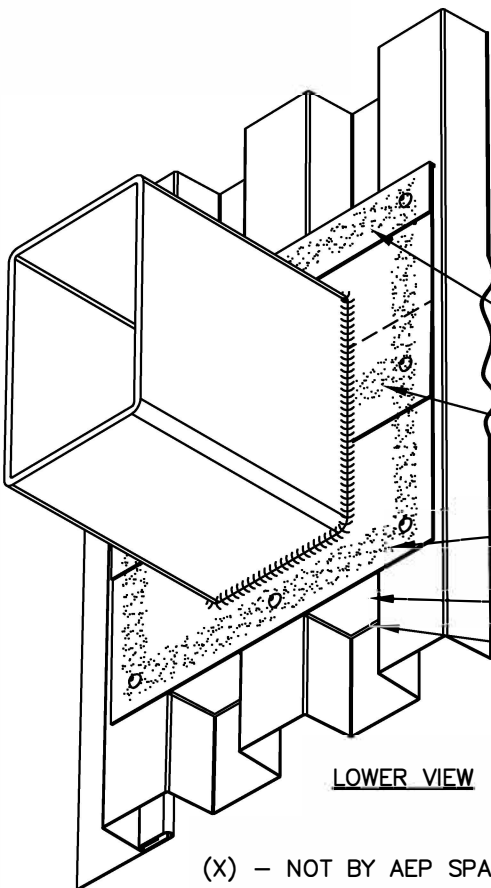
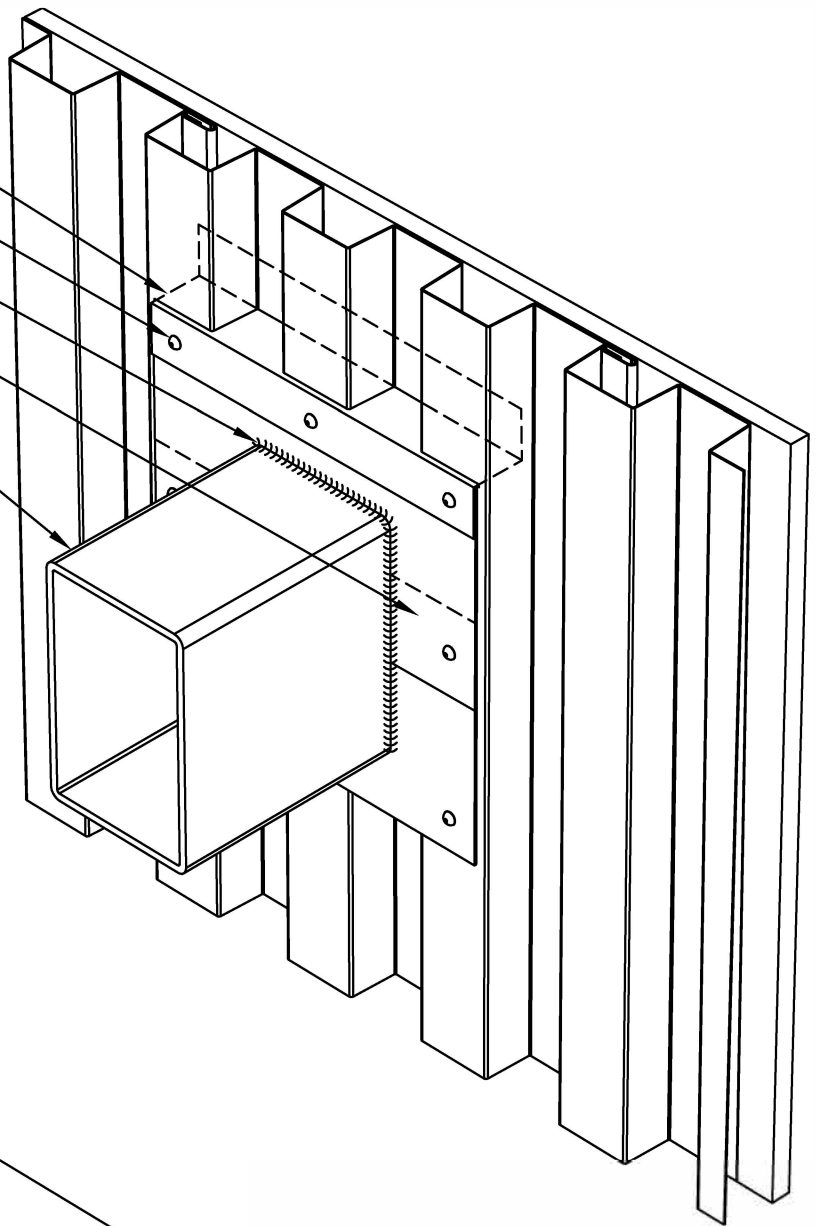
FLEX SERIES
VERTICAL INSTALL.



DOOR / WINDOW
(SILL)

FXV-16

DRIP FLASHING
 TRIM FASTENER W/SEALING
 WASHER, OR RIVET
 SEALANT
 OVERLAP UPPER/LOWER
 FLASHINGS
 WALL PENETRATION



SEAL PERIMETER OF FLASHINGS AND
 ALL TRIM OVERLAPS WITH A
 CONTINUOUS BEAD OF NON-
 SKINNING BUTYL TAPE OR SEALANT
 OPTIONAL FIELD FABRICATED
 CLOSURE COVER TRIM (X)
 OUTSIDE CLOSURE (SEALED &
 SECURED WITH SEALANT)

LOWER VIEW

(X) - NOT BY AEP SPAN

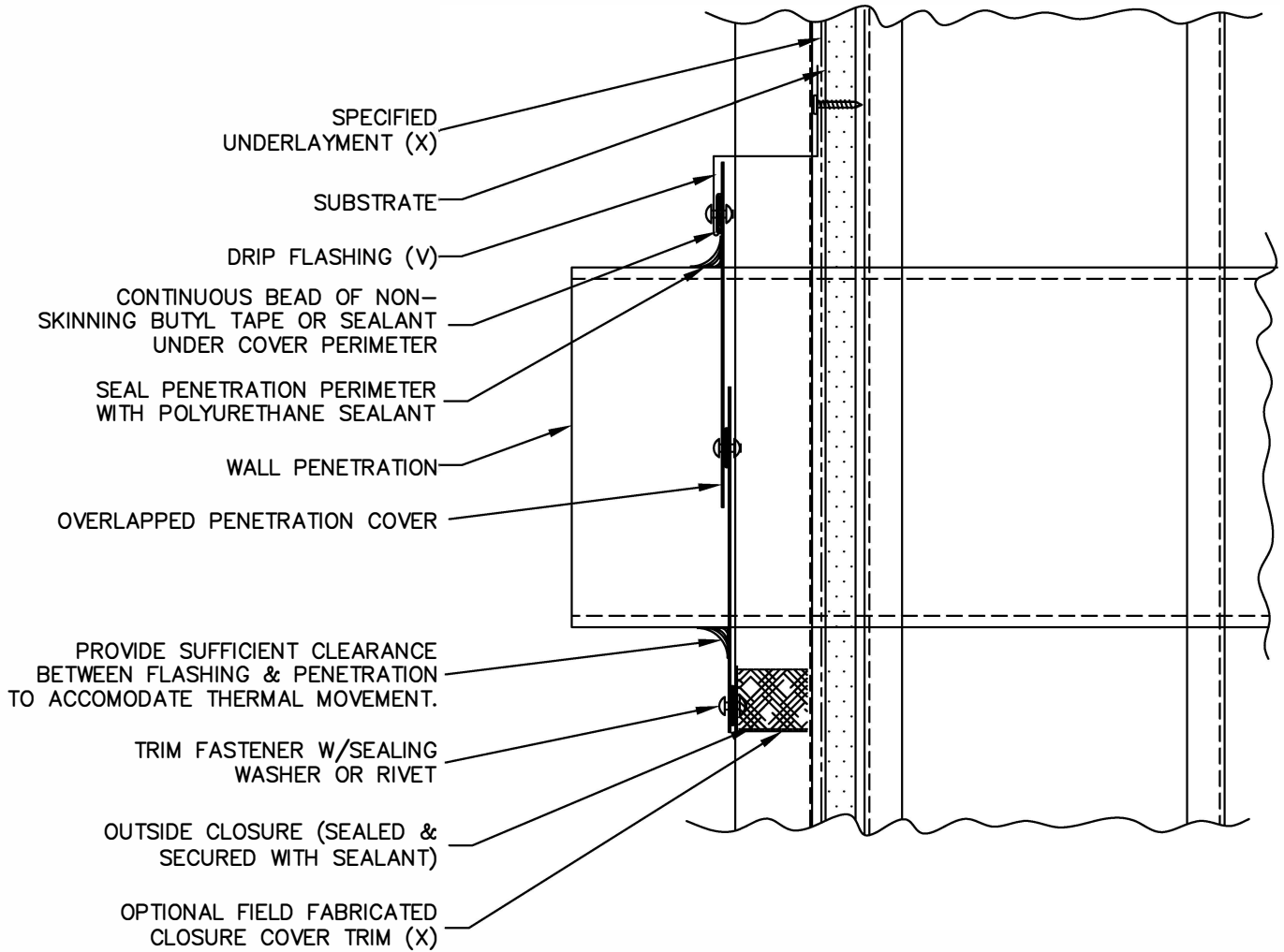


FLEX SERIES
 VERTICAL INSTALL.



WALL PENETRATION (3D)

FXV-17



(X) - NOT BY AEP SPAN

(V) - DIMENSIONS VARY BASED ON PROJECT CONDITIONS

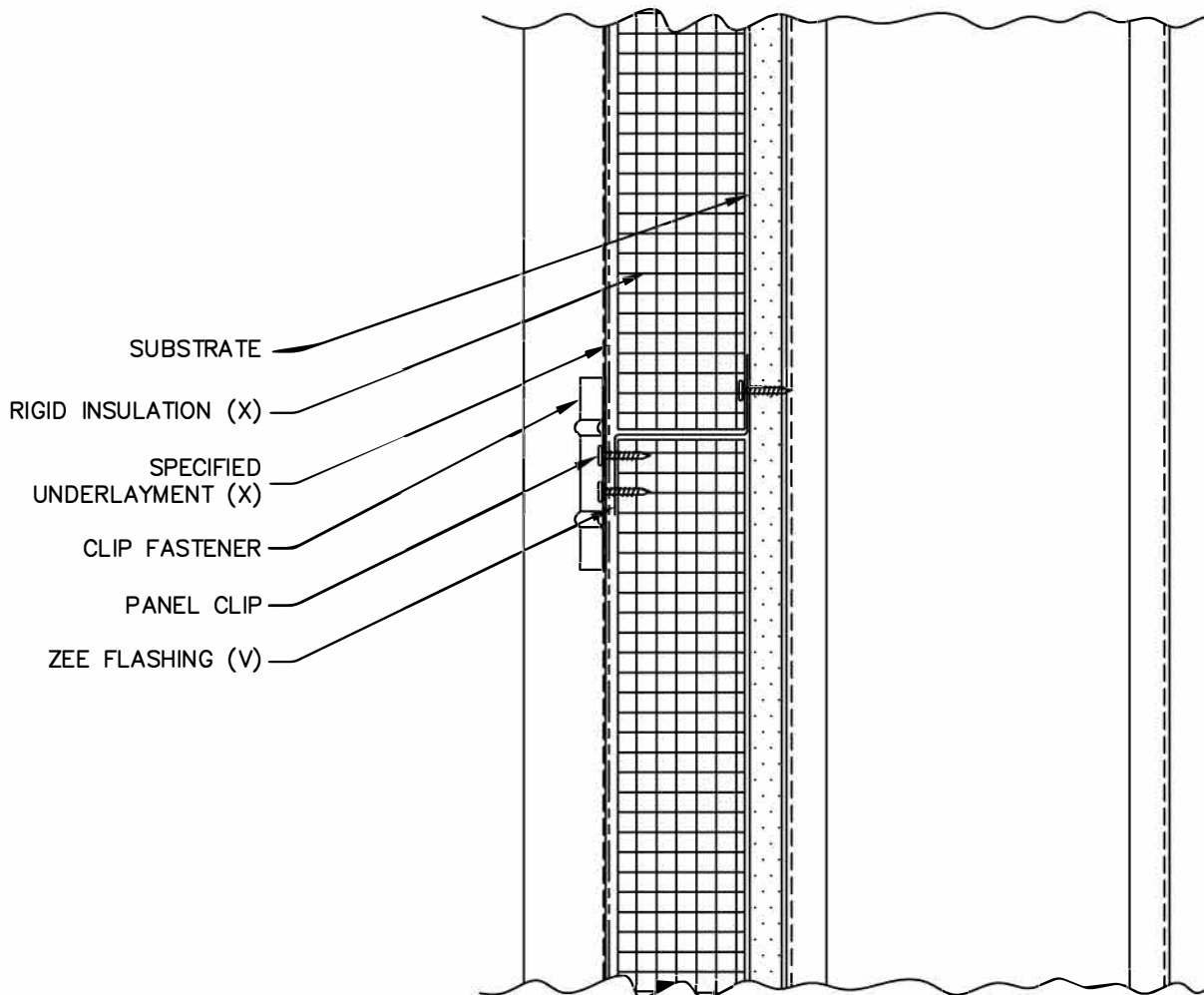


FLEX SERIES
VERTICAL INSTALL.



WALL PENETRATION

FXV-18



(X) - NOT BY AEP SPAN

(V) - DIMENSIONS AND GAGE VARY BASED ON PROJECT CONDITIONS



FLEX SERIES
VERTICAL INSTALL.



RIGID INSULATION

FXV-19

MANUFACTURING FACILITY:

Tacoma, Washington

2141 Milwaukee Way
Tacoma, WA 98421

CORPORATE HEADQUARTERS:

ASC Profiles LLC

2110 Enterprise Boulevard
West Sacramento, CA 95691

CUSTOMER SERVICE:

800-733-4955

Visit us at:

www.aepspan.com

